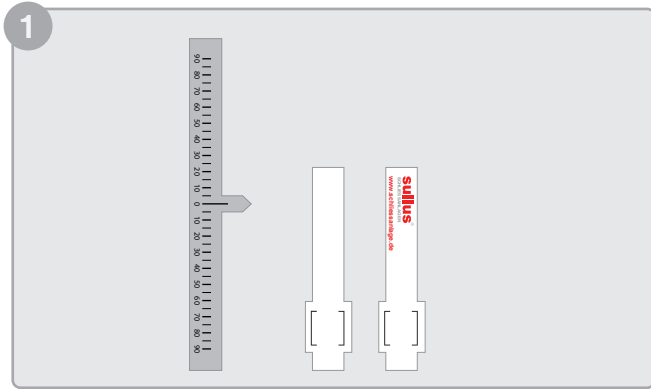
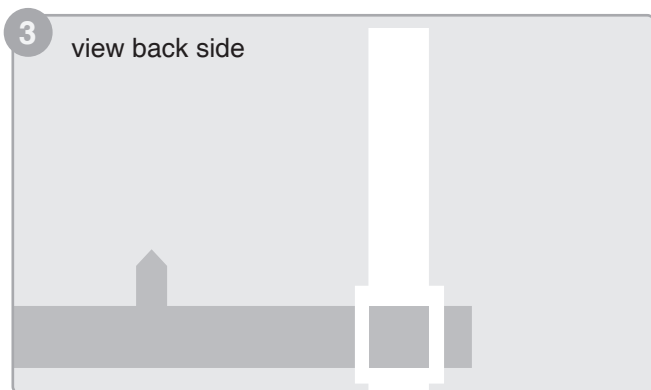


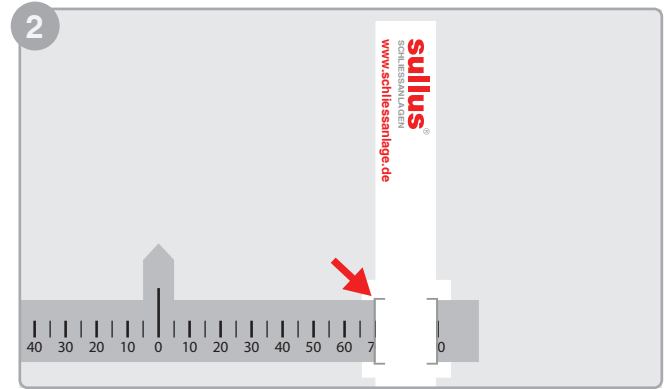
Instructions for assembly



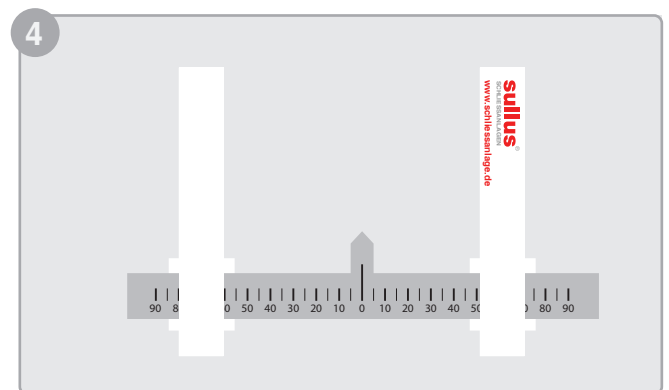
The gauge is supplied in three individual parts. The plugging together is possible without any problems.



Make sure that the protruding parts of the measuring legs are placed on the opposite side of the scale.



The part printed with the length scale is pushed through the pre-cut slots of the legs.



Please check the length indication on the scale with a ruler. When mounted correctly, the readable dimension is correct.

How do I measure correctly?

1. The tip of the cylinder gauge is placed on the centre of the fixing screw.
2. The two legs are then pushed up to the door leaf or the existing protective fittings.
3. Please ensure that the legs are aligned parallel to the door leaf to avoid measuring errors.
4. Now both values (outside and inside) can be read for the necessary cylinder length can be read off.

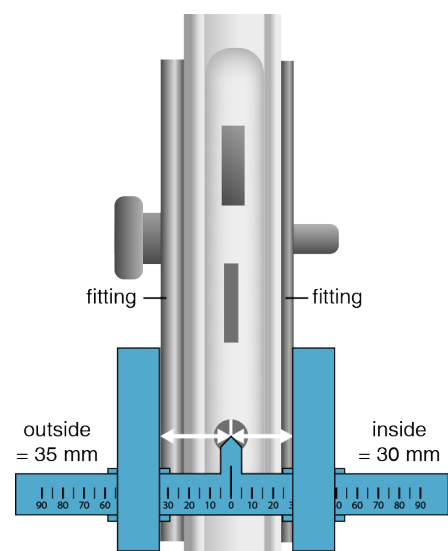
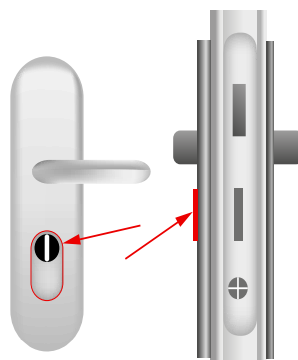
Important note

for fittings with pull protection:

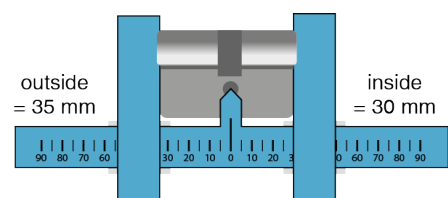
The external length of the locking cylinder must be dimensioned shorter by the amount of the core pull protection.

Our tip:

Remove the original lock cylinder and measure it.



cylinder in installed condition



cylinder in dismantled condition