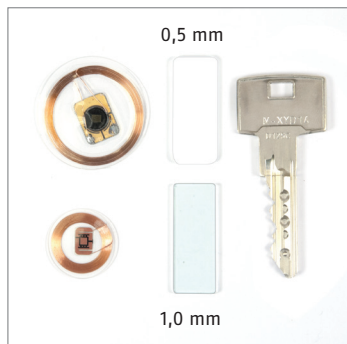


- Montage nur mit ABUS Pfaffenhain-Schlüssel
- Verwendung von RFID-Medien \varnothing 17 - 30 mm und Dicke max. 1,2 mm
- Ausgleichsstück 0,5mm (weiß) für Systeme Z14 & Integral
- Ausgleichsstück 1,0mm (klar) für Systeme Standard, V14, Y14, Y14 Deltus, W14 und Wavy Line
- Die ordnungsgemäße Montage und der Nachweis einer störungsfreien Funktion des jeweilig eingesetzten Transponders (RFID - Mediums) liegt im Verantwortungsbereich des Fachhändlers bzw. Errichters.
- Can only be used with ABUS Pfaffenhain keys
- Use of RFID Media \varnothing 17 - 30 mm and a max. thickness of 1,2 mm
- Spacer 0,5mm (white) for the use with systems Z14 & Integral
- Spacer 1,0mm (clear) for the use with systems Standard, V14, Y14, Y14 Deltus, W14 and Wavy Line
- The specialised dealer is responsible for the correct assembly and the proof of the interference-free function of the transponder used (RFID-Medium).
- L'assemblage est seulement possible sur des clés ABUS Pfaffenhain
- Utilisation d'un moyen RFID d'un diamètre de 17 - 30 mm et d'une épaisseur de max. 1,2 mm
- Pièce de compensation 0,5mm (blanc) pour les systèmes Z14 & Integral
- Pièce de compensation 1,0mm (transp.) pour les systèmes Standard, V14, Y14, Y14 Deltus, W14 et Wavy Line
- Le revendeur est responsable pour l'installation conforme aux règles ainsi que pour la preuve du fonctionnement sans défaillance du transpondeur utilisé (moyen RFID).

Montageanleitung Combi Cap Schlüssel

Assembly Instruction Keys · Notice de Montage Clé



0,5 mm

1,0 mm

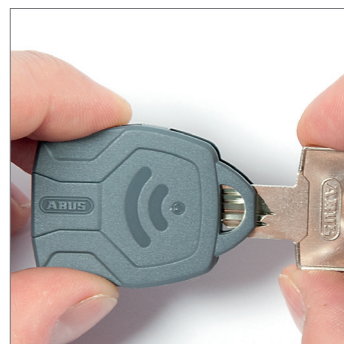
1



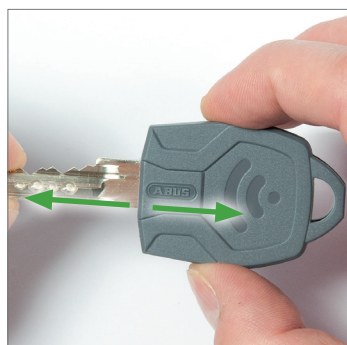
2



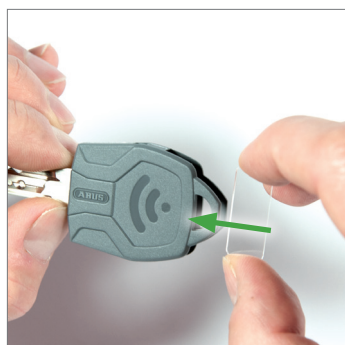
3



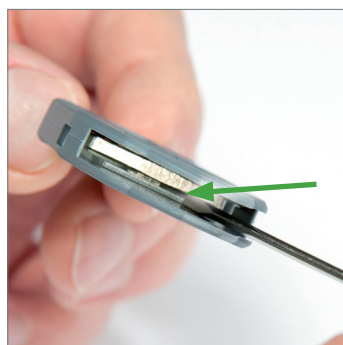
4



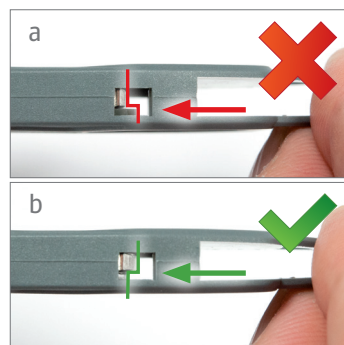
5



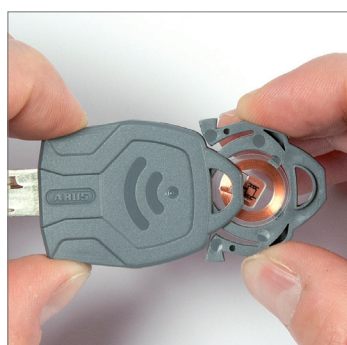
6



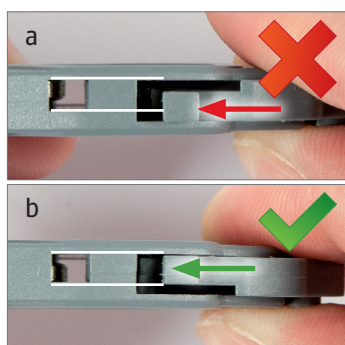
7



8



9



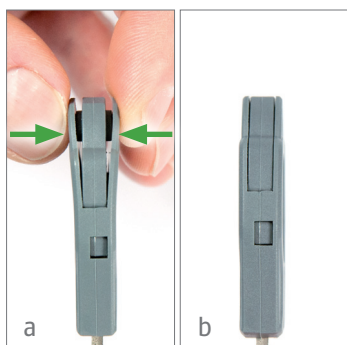
10



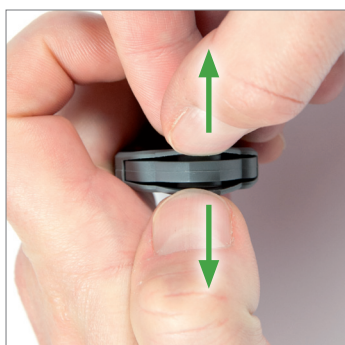
11



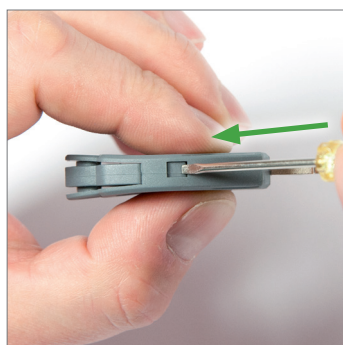
12



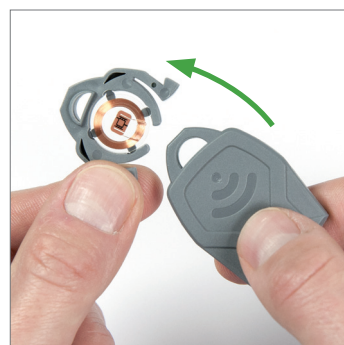
13



14



15



16

- Verwendung von RFID-Medien \varnothing 17 - 30 mm und Dicke max. 1,2 mm
- Die ordnungsgemäße Montage und der Nachweis einer störungsfreien Funktion des jeweilig eingesetzten Transponders (RFID - Mediums) liegt im Verantwortungsbereich des Fachhändlers bzw. Errichters.

- Use of RFID Media \varnothing 17 - 30 mm and a max. thickness of 1,2 mm
- The specialised dealer is responsible for the correct assembly and the proof of the interference-free function of the transponder used (RFID-Medium).

- Utilisation d'un moyen RFID d'un diamètre de 17 - 30 mm et d'une épaisseur de max. 1,2 mm
- Le revendeur est responsable pour l'installation conforme aux règles ainsi que pour la preuve du fonctionnement sans défaillance du transpondeur utilisé (moyen RFID).

Montageanleitung Combi Cap TAG

Assembly Instruction TAG · Notice de Montage TAG

1



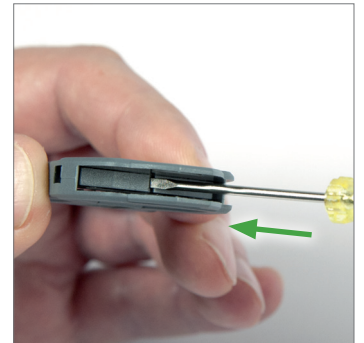
1



2



3

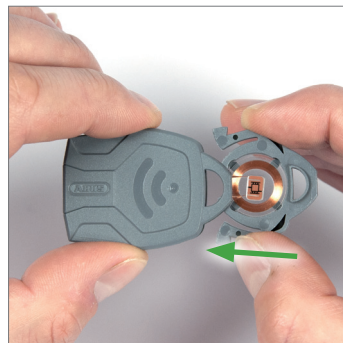


4

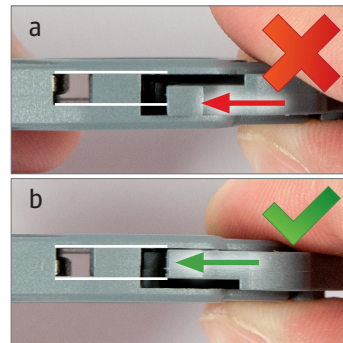
2



5



6



7

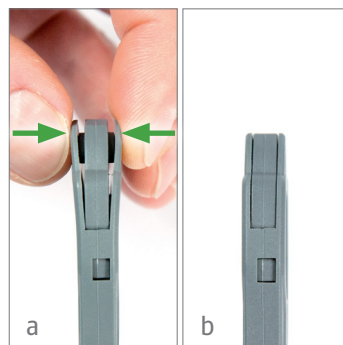


8

3

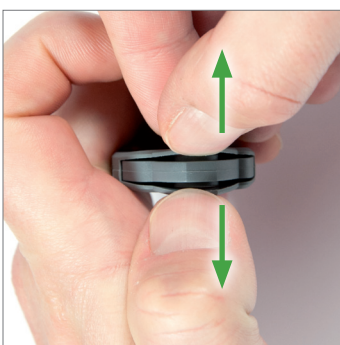


9

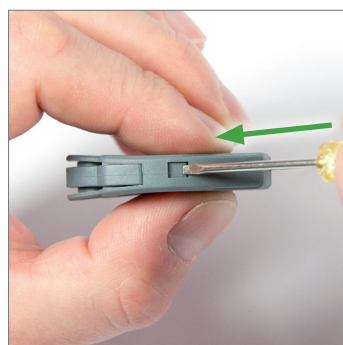


10

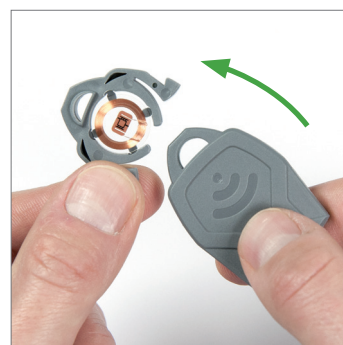
4



11



12



13